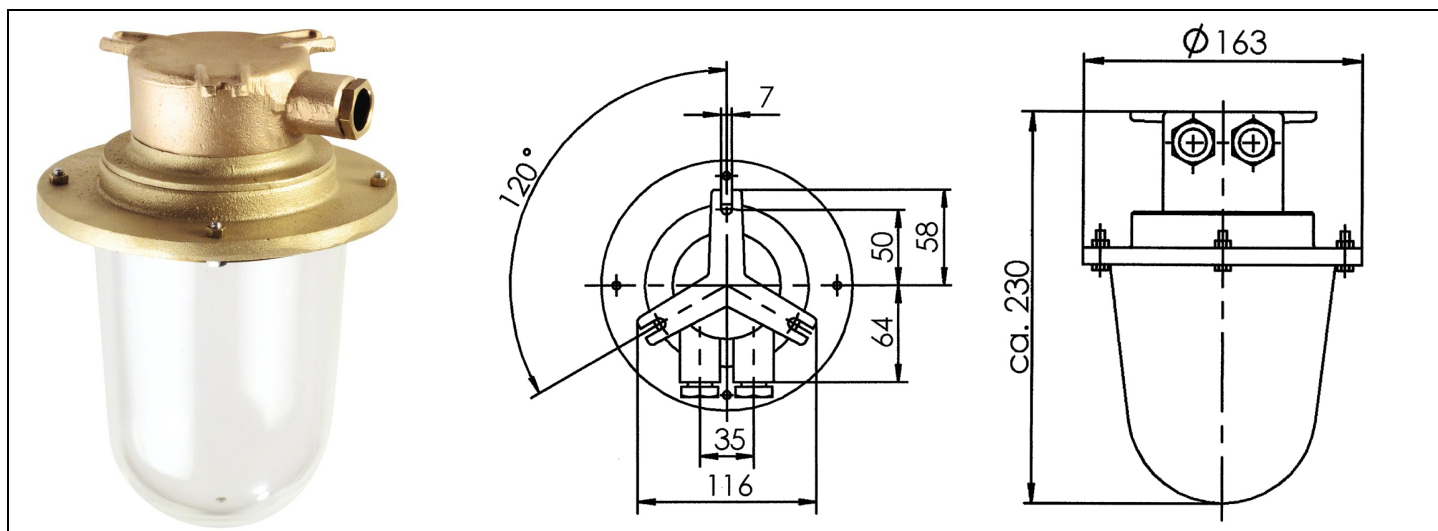


1036/oS

max. 200W,



EN 60 529:	IP 56
:	- :
:	200W/ 3.150lm ()
:	
:	

1036/oS		-	2,1
1036/oS/1954		E27	2,1
1036/oS/1955		B22	2,1
1036/2/oS		-	2,3
1036/2/oS/1954		E27	2,3
1036/2/oS/1955		B22	2,3

/				
1954	3	E27	1500, 1512, 1518/ch..., 1031, 1036, 1378,1003, 1004, 1005, 1006, 533	0,1
1955	3	B22	1500, 1518/ch..., 1031, 1036, 1378, 1003, 1004, 1005, 1006, 533	0,1
,				
1907			1036	1,0
1916		()	1036	1,4